

# Escape sliding door

Elkuch DoorSystems



durable • robust • automatized



ELKUCH GROUP



## Highest safety with practical application

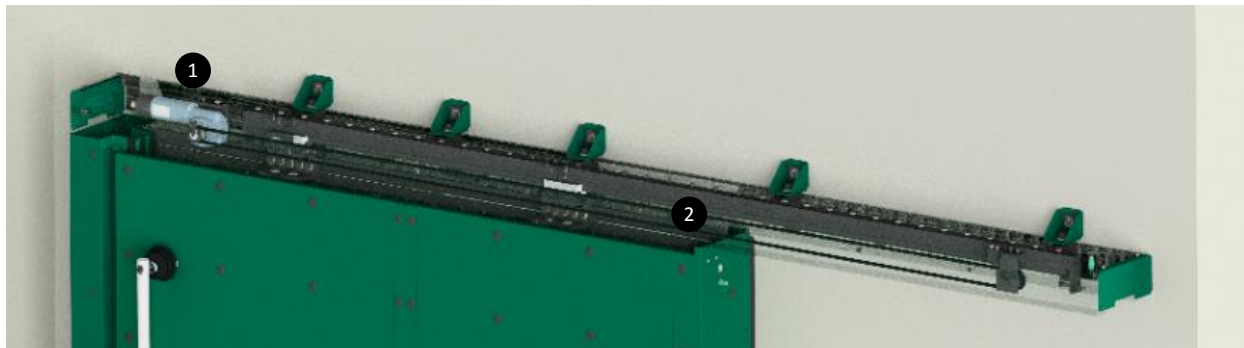
Sliding doors are characterized by their robust and durable nature. They withstand even the highest pressure and suction loads. At the same time, the sliding door can be opened with minimal effort from both sides even when different pressures are applied, ensuring a safe escape in the event of an incident.

Whether in power plants, in road- or rail tunnels, sliding doors can be used everywhere.

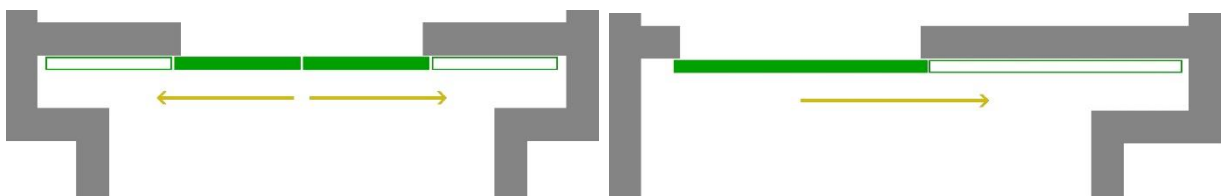
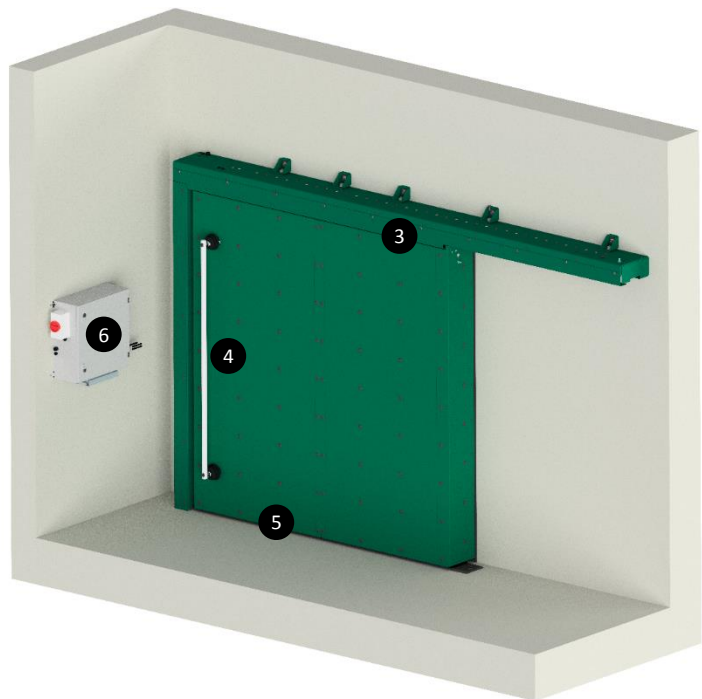
### Performance characteristics

<b>Type</b>	One- or two leaf sliding door			
<b>Operation</b>	Left- / and righthand opening			
<b>Material</b>	1.4301	1.4404	Other on request	
<b>Clear dimension</b>	1'250 x 2'100 mm		Upon customer request	
<b>Surface</b>	RAL		Upon customer request	
<b>Fire resistance UTTC</b>	EI30	EI60	EI90	EI120
<b>Pressure resistance</b>	Up to +/- 20 kPa			
<b>Opening force</b>	< 100 N with drive < 200 N without drive			
<b>Leakage</b>	< 20 m <sup>3</sup> / hm <sup>2</sup>		Upon customer request	
<b>Useful life</b>	> 25 years			
<b>Standards</b>	Fire resistance	EN 16034:2014		
	Pressure resistance	EN 12211		
	Opening force	EN 12046-2		
	Leakage	EN 1026		
	Product standard windows & doors	EN 14351-1		
<b>Optional components</b>	Drive and control	Electrical drive for opening and closing incl. control documentation		
		Limit switch		
	Monitoring	240 mm x 610 mm		
	Window	Reflective sticker		
	Signage	LED lights over the total width		
	Digitisation	Monitoring and operation can be upgraded to 4.0		

Entwicklung  
Engineering  
Produktion  
Montage  
Wartung



- ❶ Available with drive or opening aid for minimum opening forces
- ❷ New innovative slide rail ensures smooth and quiet operation of the door leaf - even after several years of dynamic load impact
- ❸ Concealed hardware enable a long lifespan with simultaneous low maintenance requirements
- ❹ Vertical opening actuation for maximum ease of use from both sides
- ❺ Threshold completely recessed in the ground enables a fast and unproblematic escape in case of emergency
- ❻ Control for drive or pneumatic sealing system





durable • robust • automatized

## Contact DoorSystems

### Headquarters

Ludwig Elkuch AG  
Schaanerstrasse 35  
LI-9487 Bendern  
+423 375 84 00  
office@elkuch.com

### Sales

*Sales International*  
Christian Nutrice  
+423 375 84 24  
c.nutrice@elkuch.com

More information is available at [www.elkuch.com](http://www.elkuch.com)

